

RETIREMENT JD FARM AUCTION

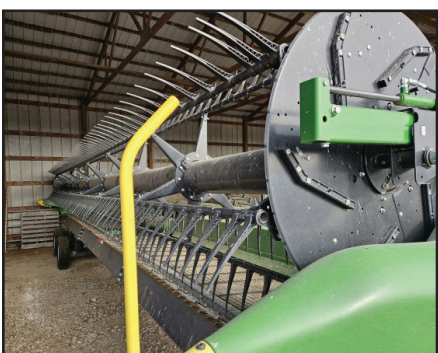
Tuesday, March 10th • 12 Noon

Storm Date — Friday, March 13th • 12 Noon

**NOTE: TIME
DATE PLACE**

**Sale will be held at Denison Livestock Auction
501 N 9th Street Denison, IA 51442**

**NOTE: TIME
DATE PLACE**



TRACTORS & GPS ACCS:

- #35 2005 JD 8320 – MFWD, 4 SCV's, Active Seat, PTO 540 plus 1000, 480/80R46 rear, 420/90R30 front, 22-front wts., 1400# Inner wts, 1800# outer wts, 4,354 hrs SN#RW8320PO33839
- #34 2007 JD 8130 – MFWD, 4 SCV's, PS Trans., DLX comf., AT ready, 480/80R46 rear, 380/85R34 front, 12-front wts., 6,428 hrs SN# RW8130PO14444
- #33 JD 4455 w/2795 Allied front loader - MFWD, Quad Range, 3 spd trans, 3 hyds., axel mount duals, 14.9R28 front, 480/80R42 back, Michelin tires Like New, motor & trans rebuilt, new hyd pump, good interior, 11,117 hrs, SN# RW4455H602966. loader complete w/ bucket, pallet forks & bale spear
- #36 2016 Star Fire 3000 Globe – SN# PCGT3TB774357
- #37 2011 JD 2630 Display Section Control – auto trac, activated SN# PCGU2UA202149

JD COMBINE & HEADS & CARTS

- #38 2016 JD S660 Combine Pro Drive, Power Cast, LED, Leather, Duals, end hrs 3,205, sep hrs 2,144, field ready SN# 1H0S660SEF0785003
- #39 2021 JD C12R – active end fenders, HHS Inter Meshing, Knife Rolls, Row Center, Stalk Deflector, SN#1HOC12RXCL0815012
- #41 2025 JD RD35F Hydra Flex Draper Bean Head 35 ft., Dual knife, Flip over reel, 150 acres, like new, SN#1HORD35FPRO830464
- #40 2021 MD Stud King Head Trailer – 32', tandem axles SN# 9547
- #42 2025 Hull Mfg Head Trailer – 36', tandem Torsion axle, rear brakes SN# 230115
- #43 Homemade Head Cart 30', tricycle, single axle, heavy duty
- #27 2022 Brent V1000 Grain Cart – loaded, camera, scale, hyd. Spout, roll tarp, rubber IF900/65R32 SN# B41470108

JD PLANTERS & SEED TENDERS

- #25 2012 JD 1760 – 12 row 30", 3.0 bu., Box, spoked Guage, Floating Trash Wheels, PDF Flex, Vacuum, Row Command Seed Star Monitor – NICE 9,014 acres, SN# 1A01760FVCM750144
- #26 2007 JD 1760 Planter, flex, finger pu., tw's, 1.6 box w/insecticide, tw, no-till culters, hi speed tuvbe sensor, many updates, SN# A01760F720230
- #24 2025 Travis Seed Tender, 4 box, scale, talc, remote SN# HSC4400
- #23 2018 Clarks Ag Supply EasiLoad Seed Tender – 2 box, brush auger NICE

SPRAYER & TIRES:

- #31 2012 JD 4830 Sprayer, 100' boom, 20", hyd tread, boom trac, delux cab, HID's, 380/90R46, fancy, like new, 1123.5 hrs, SN# 1N04830XAB0018312
- #32 4 – JD 4830 Float Tire Set – Firestone 650/65R38, like new

FARM EQUIPMENT

- #30 Mayrath Truck Auger Buhler SN# 928863
- #29 2024 Farm King 1031 Truck Auger w/Honda gas motor, like new, SN# 103150000171
- #28 2018 Farm King Auger – 10X80, new flighting in 2024, new gear box & tires in 2025, new bearing in 2024
- #22 JD 960 Field Cultivator – 22', 3 bar w/harrow
- #21 JD 714 Chisel Disk
- #20 JD 235 Disk - 24' Older, HD rock disc blades, SN# 198054
- #19 JD 235 Disk – 24' Older HD rock disc blades, SN# 011498

TRUCKS & TRAILERS:

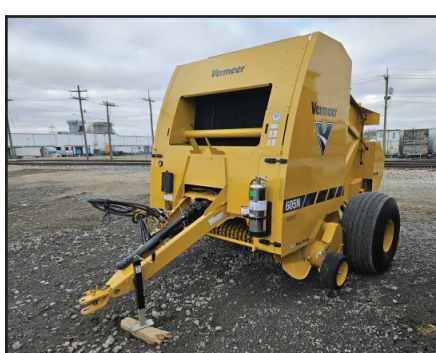
- #18 1988 Chevrolet 70 Straight Truck – 10 sp., 427 motor, dual axles, Omaha Standard Steel Box, 650 bu. box, fancy, air brakes, 36,098 miles, VIN# 1GBM7D1E6JV114785
- #17 1991 GMC Top Kick Red Straight Truck – 10 sp. High-low, steel box, 11R22.5 new rubber, fancy, 18,985 miles SN# 763742
- #16 2005 Load Master Trailer w/beaver tail – 29X8.5 ft, dual axles, newer tires SN# 4JLFG292956LM600Z
- #15 2019 East Texas Fuel Trailer – 600 gal. fuel tank, 8 ply tires, 205/75R15 (new in Nov), w/Pro Pump SN# 58SBT0834LE01937

HAY EQUIPMENT:

- #14 2018 JD 946 Moco – impeller, great cond., SN# IE00946TEHJ110027
- #13 2025 Vermeer 605N Baler – auto, greaser, net wrap, light pkg, 856 bales, bale ramp – Like New SN# 1VRM1614CS1021379
- #12 2021 Kuhn Speed Rake – 12 wheel, SR112 GII, whip kicker SN# KNAA1020P60E00207
- #11 2023 Kuhn Speed Rake w/kicker – 12 wheel, SR112 GII, like new SN# KNAA1020PGIE02345
- #10 2021 Kuhn GMD 280HD Mower – 7 disc. SN#KSAA1025T80004338

MISCELLANEOUS ITEMS:

- #9 Bush Hog 2512 Mower, older, new gear box, new PTO & new blades in 2024 SN# SN00177
- #8 Pacer Pump w/Briggs motor
- #7 Pacer Pump w/Briggs motor
- #6 Polly Tank – 3,200 gal, white
- #5 Roto-Mold Polly Tank – 3,000 gal, black
- #4 Polly Tank 1,000 gal, white
- #3 Roto Mold Eductor – 30 gal
- #2 Wood Feed Bunks 16'
- #1 Wood Feed Bunks 16'



DON'T MISS THIS SALE!

AUCTIONEERS NOTE: Cole & Lisa are changing their operation and will sell their machinery to the highest bidder. This is a fancy well kept line of machinery in great condition. Most equipment was bought new or 2nd owner. Van Wall went through tractors, combine, planters and sprayer they have been serviced and all are **FIELD READY!** All equipment is at Denison Livestock Auction North lot. **Stop in and take a look!** For more information on all JD equipment call Todd, service manager at Van Wall, Adair, IA 515-330-9617

TERMS: CASH, Wire Transfer or Cashier's Check. If not known by Auction Company, a bank letter of guarantee would be appreciated. Nothing to be removed until settled for. A 4% Buyers Premium will be applied to all on-line purchase with a \$1,000.00 maximum. All Sales Final. All items are sold as-is where is without warranty expressed or implied. Auctioneer will have final say in all sales. This is an absolute sale – all items will be sold to highest bidder with no price reserves.

ONLINE BIDDING STARTS AT 12 NOON

Equipmentfacts™

Powered by TractorHouse.com, MachineryTrader.com, TruckPaper.com & MarketBook.com

<https://www.equipmentfacts.com/listings/upcoming-auctions/pauley-family-auction-services-llc/>

C&L Farms, Owner

Denison Livestock Auction 712-263-3149 or JR Pauley 712-269-7777

Pauley Family Auction Services LLC, Auctioneers • 712-263-3149 or JR 712-269-7777